



# LoadSafe EVA 4200

4x160A 400V 75kW

PRODUCT NUMBER	20326
GTIN	6419410203262
E-NUMBER FI	3600840
TECHNICAL NAME	4x160A 400V 75kW
ETIM CLASS	EC000216

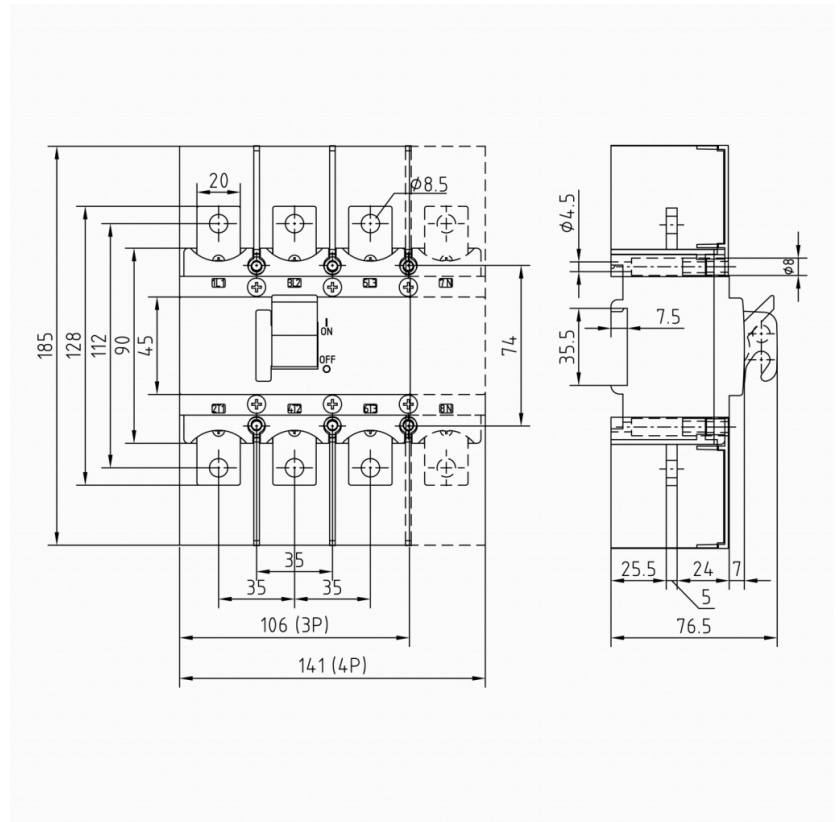
## MEASUREMENTS

HEIGHT	77 mm
WIDTH	128 mm
DEPTH	141 mm
VOLUME	1.3897 l

## LOGISTICAL DATA

SALES UNIT	1
PACKAGE SIZE 1	1
PACKAGE SIZE 1	141 mm
DEPTH	
PACKAGE SIZE 1	77 mm
HEIGHT	
PACKAGE SIZE 1	141 mm
WIDTH	
PACKAGE SIZE 1	1.5308 l
VOLUME	

## DIMENSIONAL DRAWING



## TECHNICAL DATA

NUMBER OF POLES	4
ATEX	No
RATED OPERATIONAL CURRENT AC-23A 415 V, IE (A)	160
RATED INSULATION VOLTAGE, UI (V)	690
NOMINAL VALUES WITH CABLE SIZE (MM <sup>2</sup> )	95
RATED THERMAL CURRENT, ITH (A)	200
RATED OPERATIONAL CURRENT AC-21A 415 V, IE (A)	200
RATED OPERATIONAL CURRENT AC-22A 415 V, IE (A)	200
RATED OPERATIONAL POWER, 3- PHASE 1500 RPM SQUIRREL-CAGE MOTOR AC-23A 415 V (KW)	75
RATED FUSED SHORT-CIRCUIT CURRENT, BACK-UP FUSE OPTION 1 (A)	250
RATED FUSED SHORT-CIRCUIT CURRENT, R.M.S. IQ OPTION 1 (KA)	50
RATED FUSED SHORT-CIRCUIT CURRENT, PEAK VALUE (KA)	21
RATED IMPULSE WITHSTAND VOLTAGE, UIMP (KV)	6
RATED SHORT-CIRCUIT MAKING CAPACITY, ICM 415 V (KA)	11.4
RATED SHORT-TIME WITHSTAND CURRENT 1 S, ICW 415 V (KA)	6.5
RATED BREAKING CAPACITY, AC- 23A 415 V (A)	1280
ELECTRICAL ENDURANCE (NUMBER OF OPERATIONS)	2000

MECHANICAL ENDURANCE (NUMBER OF OPERATIONS)	16000
TERMINAL / BOLT SIZE CU (MM <sup>2</sup> )	M8
MAXIMUM TERMINAL TORQUE (NM)	15..22
SWITCH TYPE	Load Break Switch