



# LoadSafe KU 3800 SV

**3x800A 690V AC-22**



PRODUCT NUMBER	48400
GTIN	6419410484005
E-NUMBER FI	3602884
TECHNICAL NAME	3x800A 690V AC-22
ETIM CLASS	EC000216

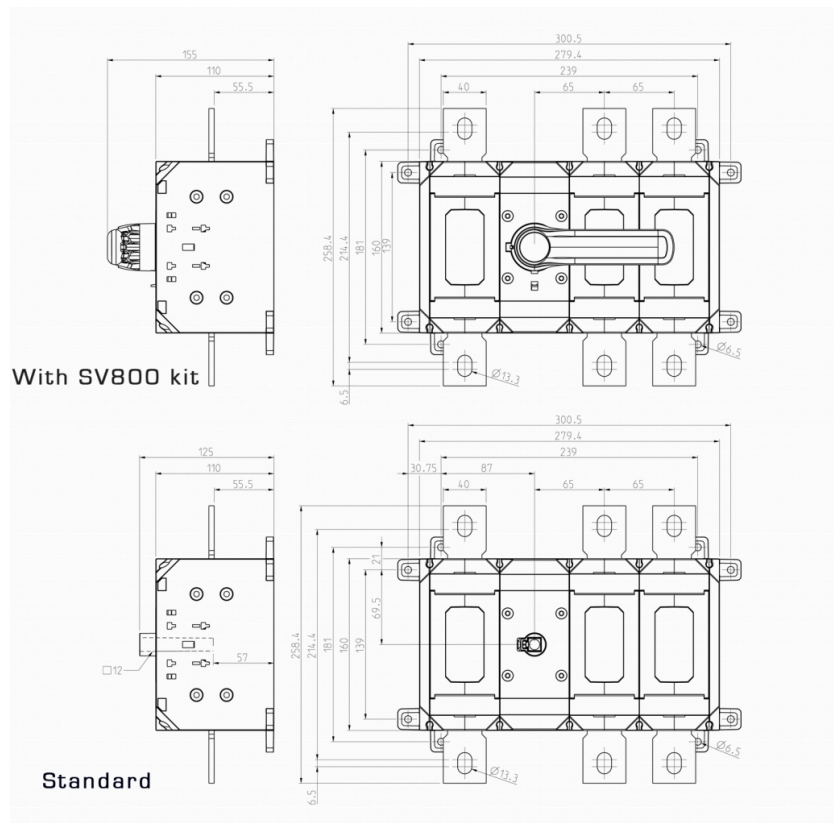
## MEASUREMENTS

HEIGHT	155 mm
WIDTH	259 mm
DEPTH	301 mm
VOLUME	12.0836 l
NET WEIGHT	5.2079 kg

## LOGISTICAL DATA

SALES UNIT	1
PACKAGE SIZE 1	1
PACKAGE SIZE 1	301 mm
DEPTH	
PACKAGE SIZE 1	155 mm
HEIGHT	
PACKAGE SIZE 1	301 mm
WIDTH	
PACKAGE SIZE 1	5.2079 kg
WEIGHT	
PACKAGE SIZE 1	14.0432 l
VOLUME	

## DIMENSIONAL DRAWING



## TECHNICAL DATA

NUMBER OF POLES	3
ATEX	No
RATED OPERATIONAL CURRENT AC-23A 415 V, IE (A)	800
RATED OPERATIONAL CURRENT AC-23A 690 V, IE (A)	800
RATED OPERATIONAL POWER, 3- PHASE 1500 RPM SQUIRREL-CAGE MOTOR AC-23A 690 V (KW)	800
RATED INSULATION VOLTAGE, UI (V)	1000
NOMINAL VALUES WITH CABLE SIZE (MM <sup>2</sup> )	2*300
RATED THERMAL CURRENT, ITH (A)	800
RATED OPERATIONAL CURRENT AC-21A 415 V, IE (A)	800
RATED OPERATIONAL CURRENT AC-21A 500 V, IE (A)	800
RATED OPERATIONAL CURRENT AC-21A 690 V, IE (A)	800
RATED OPERATIONAL CURRENT AC-22A 415 V, IE (A)	800
RATED OPERATIONAL CURRENT AC-22A 500 V, IE (A)	800
RATED OPERATIONAL CURRENT AC-22A 690 V, IE (A)	800
RATED OPERATIONAL CURRENT AC-23A 240 V, IE (A)	800
RATED OPERATIONAL CURRENT AC-23A 500 V, IE (A)	800
RATED OPERATIONAL CURRENT AC-23A 1000 V, IE (A)	400

RATED OPERATIONAL POWER, 3-PHASE 1500 RPM SQUIRREL-CAGE MOTOR AC-23A 415 V (KW)	400
RATED OPERATIONAL POWER, 3-PHASE 1500 RPM SQUIRREL-CAGE MOTOR AC-23A 500 V (KW)	560
RATED FUSED SHORT-CIRCUIT CURRENT, BACK-UP FUSE OPTION 1 (A)	800
RATED FUSED SHORT-CIRCUIT CURRENT, R.M.S. IQ OPTION 1 (KA)	100
RATED FUSED SHORT-CIRCUIT CURRENT, PEAK VALUE (KA)	76
RATED IMPULSE WITHSTAND VOLTAGE, UIMP (KV)	12
RATED SHORT-CIRCUIT MAKING CAPACITY, ICM 690 V (KA)	60
RATED SHORT-TIME WITHSTAND CURRENT 1 S, ICW 1000 V (KA)	28
RATED BREAKING CAPACITY, AC-23A 415 V (A)	6400
RATED BREAKING CAPACITY, AC-23A 500 V (A)	6400
RATED BREAKING CAPACITY, AC-23A 690 V (A)	6400
ELECTRICAL ENDURANCE (NUMBER OF OPERATIONS)	2000
MECHANICAL ENDURANCE (NUMBER OF OPERATIONS)	10000
TERMINAL / BOLT SIZE CU (MM <sup>2</sup> )	M12
MAXIMUM TERMINAL TORQUE (NM)	50..75
SWITCH TYPE	Load Break Switch