

# KU 6250W SV

6x250A 690V AC-22



|                |                   |
|----------------|-------------------|
| PRODUCT NUMBER | 20543             |
| GTIN           | 6419410205433     |
| E-NUMBER FI    | 3609220           |
| TECHNICAL NAME | 6x250A 690V AC-22 |
| ETIM CLASS     | EC000216          |

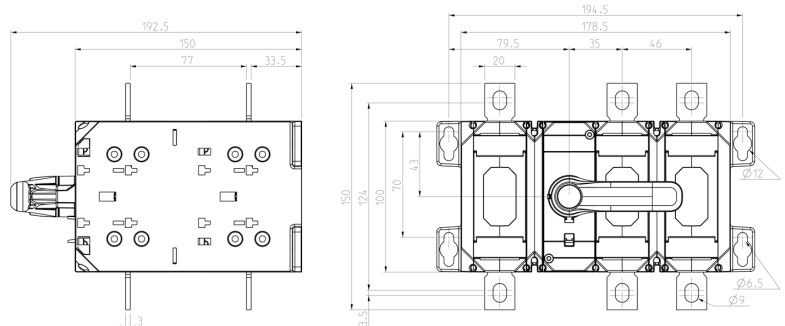
## MEASUREMENTS

|            |           |
|------------|-----------|
| HEIGHT     | 113 mm    |
| WIDTH      | 157 mm    |
| DEPTH      | 150 mm    |
| VOLUME     | 2.6612 l  |
| NET WEIGHT | 2.9798 kg |

## DIMENSIONAL DRAWING

## LOGISTICAL DATA

|                |           |
|----------------|-----------|
| SALES UNIT     | 1         |
| PACKAGE SIZE 1 | 1         |
| PACKAGE SIZE 1 | 150 mm    |
| DEPTH          |           |
| PACKAGE SIZE 1 | 113 mm    |
| HEIGHT         |           |
| PACKAGE SIZE 1 | 150 mm    |
| WIDTH          |           |
| PACKAGE SIZE 1 | 2.9798 kg |
| WEIGHT         |           |
| PACKAGE SIZE 1 | 2.5425 l  |
| VOLUME         |           |



## TECHNICAL DATA

|  |      |
|--|------|
| NUMBER OF POLES  | 6    |
| ATEX   | No   |
| RATED OPERATIONAL CURRENT<br>AC-23A 415 V, IE (A)                                      | 250  |
| RATED OPERATIONAL CURRENT<br>AC-23A 690 V, IE (A)                                      | 250  |
| RATED OPERATIONAL POWER, 3-<br>PHASE 1500 RPM SQUIRREL-CAGE<br>MOTOR AC-23A 690 V (KW) | 250  |
| RATED INSULATION VOLTAGE, UI<br>(V)  | 1000 |
| NOMINAL VALUES WITH CABLE<br>SIZE (MM <sup>2</sup> )                                   | 120  |
| RATED THERMAL CURRENT, ITH<br>(A)  | 315  |
| RATED OPERATIONAL CURRENT<br>AC-21A 415 V, IE (A)                                      | 250  |
| RATED OPERATIONAL CURRENT<br>AC-21A 500 V, IE (A)                                      | 250  |
| RATED OPERATIONAL CURRENT<br>AC-21A 690 V, IE (A)                                      | 250  |
| RATED OPERATIONAL CURRENT<br>AC-22A 415 V, IE (A)                                      | 250  |
| RATED OPERATIONAL CURRENT<br>AC-22A 500 V, IE (A)                                      | 250  |
| RATED OPERATIONAL CURRENT<br>AC-22A 690 V, IE (A)                                      | 250  |
| RATED OPERATIONAL CURRENT<br>AC-22A 800 V, IE (A)                                      | 250  |
| RATED OPERATIONAL CURRENT<br>AC-23A 500 V, IE (A)                                      | 250  |
| RATED OPERATIONAL CURRENT<br>AC-23A 1000 V, IE (A)                                     | 135  |

|   |                   |
|---|-------------------|
| RATED OPERATIONAL POWER, 3-PHASE 1500 RPM SQUIRREL-CAGE MOTOR AC-23A 415 V (KW) | 132               |
| RATED OPERATIONAL POWER, 3-PHASE 1500 RPM SQUIRREL-CAGE MOTOR AC-23A 500 V (KW) | 160               |
| RATED FUSED SHORT-CIRCUIT CURRENT, BACK-UP FUSE OPTION 1 (A)                    | 250               |
| RATED FUSED SHORT-CIRCUIT CURRENT, R.M.S. IQ OPTION 1 (KA)                      | 100               |
| RATED FUSED SHORT-CIRCUIT CURRENT, BACK-UP FUSE OPTION 2 (A)                    | 315               |
| RATED FUSED SHORT-CIRCUIT CURRENT, R.M.S. IQ OPTION 2 (KA)                      | 50                |
| RATED FUSED SHORT-CIRCUIT CURRENT, PEAK VALUE (KA)                              | 26                |
| RATED IMPULSE WITHSTAND VOLTAGE, UIMP (KV)                                      | 12                |
| RATED SHORT-CIRCUIT MAKING CAPACITY, ICM 690 V (KA)                             | 14                |
| RATED SHORT-TIME WITHSTAND CURRENT 1 S, ICW 1000 V (KA)                         | 8                 |
| RATED BREAKING CAPACITY, AC-23A 415 V (A)                                       | 2000              |
| RATED BREAKING CAPACITY, AC-23A 500 V (A)                                       | 2000              |
| RATED BREAKING CAPACITY, AC-23A 690 V (A)                                       | 2000              |
| ELECTRICAL ENDURANCE (NUMBER OF OPERATIONS)                                     | 2000              |
| MECHANICAL ENDURANCE (NUMBER OF OPERATIONS)                                     | 16000             |
| TERMINAL / BOLT SIZE CU (MM <sup>2</sup> )                                      | M8                |
| MAXIMUM TERMINAL TORQUE (NM)  | 15..22            |
| SWITCH TYPE   | Load Break Switch |