



# LoadSafe EVA 4200 R

4x160A 400V 75kW

|                |                  |
|----------------|------------------|
| PRODUCT NUMBER | 20327            |
| GTIN           | 6419410203279    |
| E-NUMBER FI    | 3600842          |
| TECHNICAL NAME | 4x160A 400V 75kW |
| ETIM CLASS     | EC000216         |

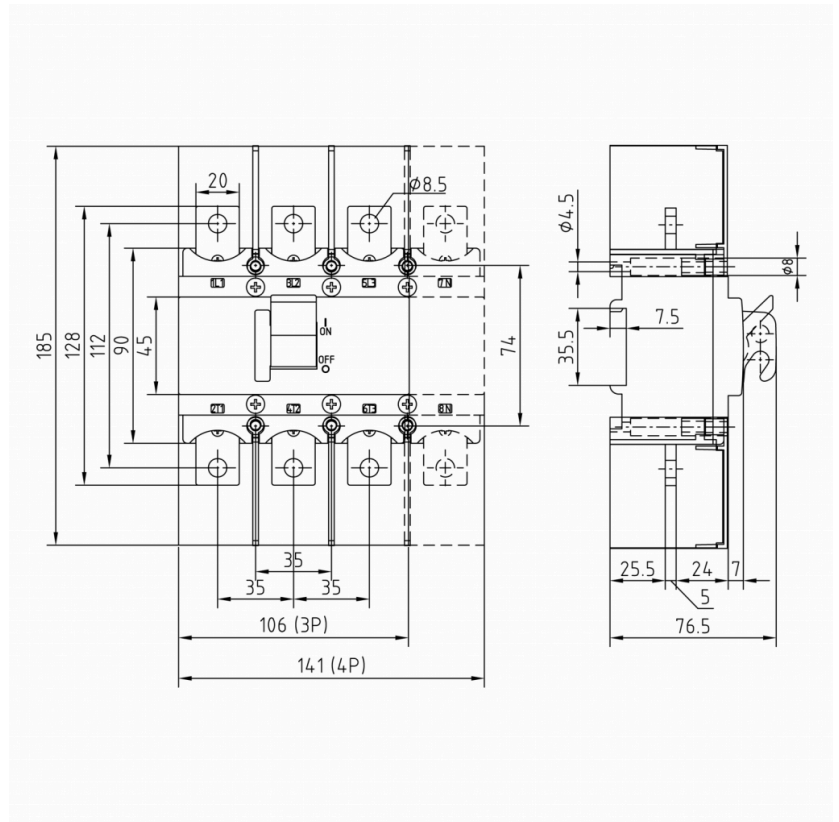
## MEASUREMENTS

|        |          |
|--------|----------|
| HEIGHT | 77 mm    |
| WIDTH  | 128 mm   |
| DEPTH  | 141 mm   |
| VOLUME | 1.3897 l |

## LOGISTICAL DATA

|                |          |
|----------------|----------|
| SALES UNIT     | 1        |
| PACKAGE SIZE 1 | 1        |
| PACKAGE SIZE 1 | 141 mm   |
| DEPTH          |          |
| PACKAGE SIZE 1 | 77 mm    |
| HEIGHT         |          |
| PACKAGE SIZE 1 | 141 mm   |
| WIDTH          |          |
| PACKAGE SIZE 1 | 1.5308 l |
| VOLUME         |          |

## DIMENSIONAL DRAWING



## TECHNICAL DATA

|  |      |
|--|------|
| NUMBER OF POLES  | 4    |
| ATEX   | No   |
| RATED OPERATIONAL CURRENT<br>AC-23A 415 V, IE (A)                                      | 160  |
| RATED INSULATION VOLTAGE, UI<br>(V)  | 690  |
| NOMINAL VALUES WITH CABLE<br>SIZE (MM <sup>2</sup> )                                   | 95   |
| RATED THERMAL CURRENT, ITH<br>(A)  | 200  |
| RATED OPERATIONAL CURRENT<br>AC-21A 415 V, IE (A)                                      | 200  |
| RATED OPERATIONAL CURRENT<br>AC-22A 415 V, IE (A)                                      | 200  |
| RATED OPERATIONAL POWER, 3-<br>PHASE 1500 RPM SQUIRREL-CAGE<br>MOTOR AC-23A 415 V (KW) | 75   |
| RATED FUSED SHORT-CIRCUIT<br>CURRENT, BACK-UP FUSE OPTION<br>1 (A)                     | 250  |
| RATED FUSED SHORT-CIRCUIT<br>CURRENT, R.M.S. IQ OPTION 1<br>(KA)                       | 50   |
| RATED FUSED SHORT-CIRCUIT<br>CURRENT, PEAK VALUE (KA)                                  | 21   |
| RATED IMPULSE WITHSTAND<br>VOLTAGE, UIMP (KV)  | 6    |
| RATED SHORT-CIRCUIT MAKING<br>CAPACITY, ICM 415 V (KA)                                 | 11.4 |
| RATED SHORT-TIME WITHSTAND<br>CURRENT 1 S, ICW 415 V (KA)                              | 6.5  |
| RATED BREAKING CAPACITY, AC-<br>23A 415 V (A)  | 1280 |
| ELECTRICAL ENDURANCE (NUMBER<br>OF OPERATIONS)   | 2000 |

|   |                   |
|---|-------------------|
| MECHANICAL ENDURANCE (NUMBER OF OPERATIONS) | 16000             |
| TERMINAL / BOLT SIZE CU (MM <sup>2</sup> )  | M8                |
| MAXIMUM TERMINAL TORQUE (NM)                | 15..22            |
| SWITCH TYPE                                 | Load Break Switch |