

KU 16-40A SWITCHES

The LoadSafe product family is known for its reliable and high-quality switches, and the series has now received a significant update. With the introduction of new 6- and 8-pole KU 16-40A switches, along with changeover switches, the LoadSafe series offers an even more versatile selection to meet the demanding requirements of industrial and construction applications.

The KU 16-40A switches can now be expanded to 6- and 8-pole configurations using the new parallel kit. Additionally, the changeover kits enable compact and high-performance changeover switch solutions. Open transition changeover switches (1-0-2) are designed to switch loads between two sources, making them ideal for backup power solutions. Closed transition changeover switches (1-1+2-2) allow both switches to be in an intermediate "on" position, ensuring a seamless transfer without interruption. These switches are commonly used in uninterrupted power supply (UPS) systems.

LoadSafe KU and RT switches are VDE-approved and tested by independent third party testing laboratory, ensuring compliance with international safety and quality standards. Our switches and accessories manufactured in Finland offer high performance and installation efficiency, enabling you to build reliable power distribution solutions.



Scan the QR code and read more

Discover our UL Listed range [here](#).

FEATURES:

- Easy to install on a DIN rail or screw mounting.
- Compact design provides more space for wiring.
- Available with fixed auxiliary contact versions (NO) or with separate auxiliary contacts.
- Switch technology by means of silver contacts ensures safe and durable operation.
- KU switch will be delivered with black direct handle. KU switches can also be used with external shaft and handle.
- KU 16-40A switches have over 20% smaller carbon footprint compared to the older generation.
- Tested according to IEC 60947-3.



SPECIFICATIONS:

Type	EAN	AC-21 400/415 V (A)								Switch type	Number of Poles
		AC-21 690 V (A)	AC-22 400/415 V (A)	AC-22 690 V (A)	AC-23A 400/415 V (A)	AC-23A 400/415 V (kW)	AC-23A 690 V (A)	AC-23A 690 V (kW)			
KU 316	6419410257692	25	25	16	16	16	7,5	16	11	Load Break Switch 0-1	3
KU 325	6419410257708	40	40	25	25	25	11	25	22	Load Break Switch 0-1	3
KU 340	6419410257715	40	40	40	40	40	22	25	22	Load Break Switch 0-1	3
KU 316NO	6419410260098	25	25	16	16	16	7,5	16	11	Load Break Switch with fixed auxiliary contact (NO)	3
KU 325NO	6419410260081	40	40	25	25	25	11	25	22	Load Break Switch with fixed auxiliary contact (NO)	3
KU 340NO	6419410260074	40	40	40	40	40	22	25	22	Load Break Switch with fixed auxiliary contact (NO)	3
KU 416	6419410257722	25	25	16	16	16	7,5	16	11	Load Break Switch 0-1	4
KU 425	6419410257739	40	40	25	25	25	11	25	22	Load Break Switch 0-1	4
KU 440	6419410257746	40	40	40	40	40	22	25	22	Load Break Switch 0-1	4
KU 616	6419410337981	25	25	16	16	16	7,5	16	11	Load Break Switch 0-1	6
KU 625	6419410337998	40	40	25	25	25	11	25	22	Load Break Switch 0-1	6
KU 640	6419410338001	40	40	40	40	40	22	25	22	Load Break Switch 0-1	6
KU 816	6419410338018	25	25	16	16	16	7,5	16	11	Load Break Switch 0-1	8
KU 825	6419410338025	40	40	25	25	25	11	25	22	Load Break Switch 0-1	8
KU 840	6419410338032	40	40	40	40	40	22	25	22	Load Break Switch 0-1	8
KU 316CO	6419410337783	25	25	16	16	16	7,5	16	11	Open Transition Changeover Switch (CO) 1-0-2	3
KU 325CO	6419410337790	40	40	25	25	25	11	25	22	Open Transition Changeover Switch (CO) 1-0-2	3
KU 340CO	6419410337806	40	40	40	40	40	22	25	22	Open Transition Changeover Switch (CO) 1-0-2	3
KU 416CO	6419410337813	25	25	16	16	16	7,5	16	11	Open Transition Changeover Switch (CO) 1-0-2	4
KU 425CO	6419410337820	40	40	25	25	25	11	25	22	Open Transition Changeover Switch (CO) 1-0-2	4
KU 440CO	6419410337837	40	40	40	40	40	22	25	22	Open Transition Changeover Switch (CO) 1-0-2	4
KU 316CT	6419410337868	25	25	16	16	16	7,5	16	11	Closed Transition Changeover Switch (CT) 1-1+2-2	3
KU 325CT	6419410337875	40	40	25	25	25	11	25	22	Closed Transition Changeover Switch (CT) 1-1+2-2	3
KU 340CT	6419410337882	40	40	40	40	40	22	25	22	Closed Transition Changeover Switch (CT) 1-1+2-2	3
KU 416CT	6419410337899	25	25	16	16	16	7,5	16	11	Closed Transition Changeover Switch (CT) 1-1+2-2	4
KU 425CT	6419410337912	40	40	25	25	25	11	25	22	Closed Transition Changeover Switch (CT) 1-1+2-2	4
KU 440CT	6419410337936	40	40	40	40	40	22	25	22	Closed Transition Changeover Switch (CT) 1-1+2-2	4

KU 16-40A SWITCH ACCESSORIES

With **parallel kits (PK)** designed for the KU 16-40A range, it is possible to extend the functionality to 6- and 8-pole applications. Additionally, **open transition (CO)** and **closed transition (CT) changeover kits** enable versatile changeover solutions. Various handle options are also available to suit different needs.

The switches are available with **fixed auxiliary contacts (NO)**, offering a compact solution that saves time and reduces installation complexity. If needed, **separate auxiliary contacts** are also available, providing flexibility for more extensive connection solutions.

Scan the QR code and read more



Switches are also available in enclosures, for example in the KU 640 M3 enclosure as shown in the image.



FEATURES:

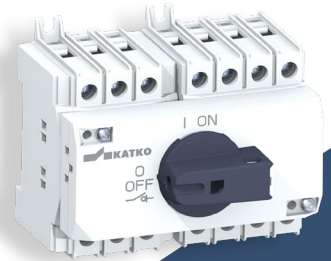
- With **parallel kits** it's possible to extend the range to 6- and 8-pole applications
- Available in **open (CO)** and **closed transition (CT) changeover kits**
- Separate auxiliary contacts available **1NO** (normal open) or **1NC** (normal closed) versions. One to two auxiliary contacts can be mounted on the either side of the switch.
- 2-, 4-, 6- and 8-pole versions are compatible with handles LKX50, LKX50YR, LK10 and LK10YR. Changeover applications require **1-0-2 handle**, LKX50CO/LKX50COYR (open transition) or **1-1+2-2 handle**, LKX50CT/LKX50CTYR (closed transition).
- Compatible with LXXXAD11 and LXXXAD11VT shafts (XXX is length of the shaft in millimetres).

SPECIFICATIONS:

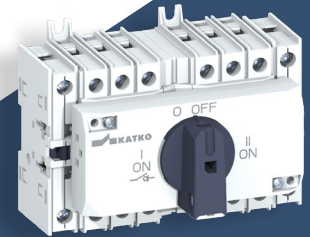
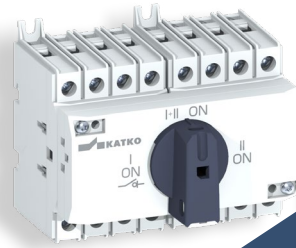
Type	EAN	Accessory type	For
CO40KU3P	6419410337844	Changeover kit (CO, open transition), 1-0-2	KU 16-40A 3P Changeover (open transition), 3-poles
CO40KU4P	6419410337851	Changeover kit (CO, open transition), 1-0-2	KU 16-40A 4P Changeover (open transition), 4-poles
CT40KU3P	6419410337943	Changeover kit (CT, closed transition), 1-1+2-2	KU 16-40A 3P Changeover (closed transition), 3-poles
CT40KU4P	6419410337950	Changeover kit (CT, closed transition), 1-1+2-2	KU 16-40A 4P Changeover (closed transition), 4-poles
PK40KU3P	6419410338049	Parallel kit, 0-1	KU 16-40A Switches, 3-poles
PK40KU4P	6419410338056	Parallel kit, 0-1	KU 16-40A Switches, 4-poles
1NO40KU	6419410263914	Auxiliary contact (1NO, normal open)	KU 16-40A Switches (side-mounted)
1NC40KU	6419410263921	Auxiliary contact (1NC, normal closed)	KU 16-40A Switches (side-mounted)
1NO40QC	6419410263891	Quick connect (auxiliary contact, 1NO, normal open)	KU & RT 16-40A Switches (side-mounted)
1NC40QC	6419410263907	Quick connect (auxiliary contact, 1NC, normal closed)	KU & RT 16-40A Switches (side-mounted)
L100AD11	6419410253106	Slanted aluminium shaft, length 100 mm	KU 16-40A switches, Handles: LK10, LKX50, LKX50CO, LKX50CT
L200AD11	6419410253113	Slanted aluminium shaft, length 200 mm	KU 16-40A switches, Handles: LK10, LKX50, LKX50CO, LKX50CT
L300AD11	6419410253120	Slanted aluminium shaft, length 300 mm	KU 16-40A switches, Handles: LK10, LKX50, LKX50CO, LKX50CT
L100AD11VT	6419410253168	Slanted steel shaft, length: 100 mm	KU 16-40A switches, Handles: LK10, LKX50, LKX50CO, LKX50CT
L200AD11VT	6419410253175	Slanted steel shaft, length: 200 mm	KU 16-40A switches, Handles: LK10, LKX50, LKX50CO, LKX50CT
L300AD11VT	6419410253182	Slanted steel shaft, length: 300 mm	KU 16-40A switches, Handles: LK10, LKX50, LKX50CO, LKX50CT
LKX50	6419410257852	Handle (black), IP65	KU & RT 16-40A Switches
LKX50YR	6419410257869	Handle (yellow/red), IP65	KU & RT 16-40A Switches
LKX50CO	6419410355541	Open Transition Changeover Handle (black), positions 1-0-2, IP65	KU 16-40A Open Transition Changeover Switches
LKX50COYR	6419410355558	Open Transition Changeover Handle (yellow/red), positions 1-0-2, IP65	KU 16-40A Open Transition Changeover Switches
LKX50CT	6419410352175	Closed Transition Changeover Handle (black), positions 1-1+2-2, IP65	KU 16-40A Closed Transition Changeover Switches
LKX50CTYR	6419410352182	Closed Transition Changeover Handle (yellow/red), positions 1-1+2-2, IP65	KU 16-40A Closed Transition Changeover Switches
LK10	6419410222539	Handle (black), IP66	KU 16-40A Switches
LK10YR	6419410222553	Handle (yellow/red), IP66	KU 16-40A Switches
FP40KU3P*	6419410338063	Front plate for DIN opening	KU 16-40A Switches, 3-poles
FP40KU4P*	6419410338070	Front plate for DIN opening	KU 16-40A Switches, 4-poles

*Coming soon

KU 640NO with fixed NO (normal open) auxiliary contact (KU340 switch + KU 340NO switch + PK40KU3P parallel kit)



KU 440CT closed transition changeover switch + CT40KU4P changeover kit, 1-1+2-2



KU 340CO open transition changeover switch (1-0-2) and two separate auxiliary contacts (1NO40KU) on both sides

RT 16-40A SWITCHES

Compact and robust LoadSafe RT 16-40A switches are specifically designed for door-mounting applications. These innovative switches can also be installed on the side of an enclosure, providing added flexibility for your setup. LoadSafe RT switch is the most installation-friendly door-mounted switch on the market for a quick and effortless installation process. Wiring is done from the back of the switch and no mounting screws needed.

Our RT series includes 3-pole door mounting switch solutions, complemented by a variety of accessories such as auxiliary contacts (1NO40RT and 1NC40RT) and handles (LKX50, LKX50YR, LK10RT, and LK10RTYR) to enhance installation options.



RT 340 L42AD11LKX50

RT 340 L42AD11LKX50YR

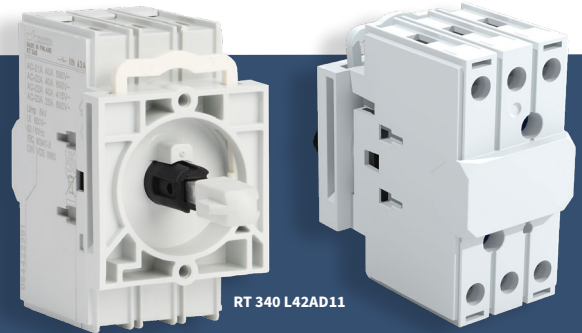


Scan the QR code and read more

Discover our UL Listed range [here](#).

FEATURES:

- Door mounting switch (RT)
- RT switch available as 3-pole version.
- Switch technology by means of silver contacts ensures safe and durable operation.
- A handle is required for installation. The RT-switch is compatible with handles LKX50, LKX50YR, LK10RT, and LK10RTYR.
- Tested according to IEC 60947-3.



RT 340 L42AD11



SPECIFICATIONS:

Type	EAN code	AC-21 400/415 V (A)								Description	Number of Poles
		AC-21 690 V (A)	AC-22 400/415 V (A)	AC-22 690 V (A)	AC-23A 400/415 V (A)	AC-23A 400/415 V (kW)	AC-23A 690 V (A)	AC-23A 690 V (kW)			
RT 316 L42AD11	6419410261286	25	25	16	16	16	7,5	16	11	Door Mounting Switch	3
RT 316 L42AD11LKX50	6419410257753	25	25	16	16	16	7,5	16	11	Door Mounting Switch + LKX50 handle	3
RT 316 L42AD11LKX50YR	6419410257784	25	25	16	16	16	7,5	16	11	Door Mounting Switch + LKX50YR handle	3
RT 325 L42AD11	6419410261293	40	40	25	25	25	11	25	22	Door Mounting Switch	3
RT 325 L42AD11LKX50	6419410257760	40	40	25	25	25	11	25	22	Door Mounting Switch + LKX50 handle	3
RT 325 L42AD11LKX50YR	6419410257791	40	40	25	25	25	11	25	22	Door Mounting Switch + LKX50YR handle	3
RT 340 L42AD11	6419410261309	40	40	40	40	40	22	25	22	Door Mounting Switch	3
RT 340 L42AD11LKX50	6419410257777	40	40	40	40	40	22	25	22	Door Mounting Switch + LKX50 handle	3
RT 340 L42AD11LKX50YR	6419410257807	40	40	40	40	40	22	25	22	Door Mounting Switch + LKX50YR handle	3

ACCESSORIES:

Type	EAN code	Description	For
1NO40RT	6419410263938	Auxiliary contact (1NO, normal open)	RT 16-40A Switches (side-mounted)
1NC40RT	6419410263945	Auxiliary contact (1NC, normal closed)	RT 16-40A Switches (side-mounted)
1NO40QC	6419410263891	Quick connect connector (auxiliary contact, 1NO, normal open)	KU & RT 16-40A Switches (side-mounted)
1NC40QC	6419410263907	Quick connect connector (auxiliary contact, 1NC, normal closed)	KU & RT 16-40A Switches (side-mounted)
LK10RT	6419410266526	Handle with RT counter nut (black)	RT 16-40A Switches
LK10RTYR	6419410266533	Handle with RT counter nut (yellow/red)	RT 16-40A Switches

2D & 3D IMAGES

Scan the QR code to find step and dwg files of the products in the brochure. If you can't find what you are looking for please contact us via the contact us form.

