

## SWITCH OPTIONS 16-40 A

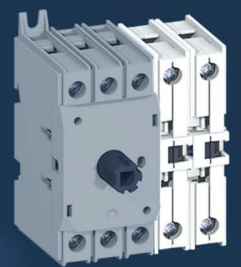
KU 340



KU 440



KU 340NO



### AUXILIARY CONTACT OPTIONS\*

- 1NO40KU
- 1NC40KU
- 1NO40QC
- 1NC40QC



PARALLEL KIT PK40KU  
(0-1)

### AUXILIARY CONTACT OPTIONS\*

- 1NO40KU
- 1NC40KU
- 1NO40QC
- 1NC40QC



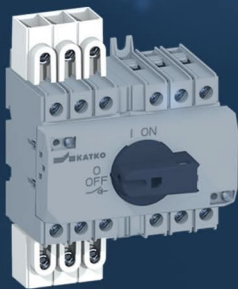
CHANGE-OVER KIT CO40KU  
(CO, open transition, 1-0-2)



CHANGE-OVER KIT CT40KU  
(CT, closed transition, 1-1+2-2)

## ACCESSORIES

KKL3X1X16T  
cable connectors



KKL3X1X16T  
cable connectors



LK10 handle, 0-1 (YR version also available)



LKX50CO102 change-over handle, 1-0-2 (YR version also available)

LXXAD11 aluminium shaft (also slanted steel, VT versions available)



LKX50 handle, 0-1 (YR version also available)



LKX50CT change-over handle, 1-1+2-2 (YR version also available)

Coming soon  
FP40KU front plate  
for 3- & 4-pole\*\*



\*Different combinations of switches with auxiliary contacts are available. Switches are available in with fixed auxiliary contact (NO) or with separate side-mounting auxiliary contacts. One to two auxiliary contacts can be added to either side of the switches.

\*\*1NO+1NC / 2NO+2NC integrated auxiliary contacts will be available.